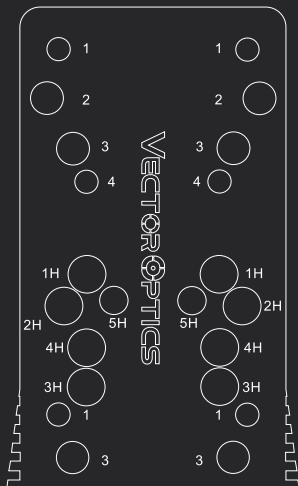


## SCFRM-21

### Installation Notes



	Effective Length	Head Type	Head Drive
M3x6	6mm	NO	Hexago
M3.5x12	8.5mm	Tapered	Torx t15
M4x12	8mm	Tapered	Torx t15
M4x16	12mm	Tapered	Torx t15



Recoil Pin A



Recoil Pin B

#### TEK

4 recoil pins A. Put recoil pins A into the No. 1 holes, fasten with screws into the 1H threaded holes.

#### MAG

4 recoil pins B. Put recoil pins B into the No. 3 holes, fasten with screws into the 3H threaded holes.

#### MOJ

2 recoil pins B. Put recoils pins B into the No. 2 holes, fasten with screws into the 2H threaded holes.

#### GIN

2 recoil pins A. Put recoils pins A into the No. 4 holes, fasten with screws into the 4H threaded holes.

#### 5H threaded holes

Use machine screws to fasten the adapter and firearms.

