

VECTOR OPTICS®

FRENZY USER MANUAL
RED DOT SIGHT

READ IT BEFORE USE!!!

READ AND UNDERSTAND THE CONTENTS OF YOUR FIREARM'S AND SCOPE MANUAL. FOLLOW ALL STANDARD SAFETY PRECAUTIONS AND PROCEDURES DURING FIREARM OPERATION.

▼ *Scan the QR code to learn more about VectorOptics*



VECTOROPTICS



USER MANUAL



FACEBOOK



INSTAGRAM



NEVER LOOK AT THE SUN THROUGH THE RED DOT SIGHT (OR ANY OTHER OPTICAL INSTRUMENT). IT MAY PERMANENTLY DAMAGE YOUR EYES.

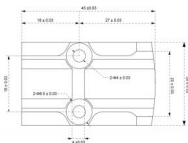
MAKE SURE FIREARMS ARE UNLOADED AND POINTED IN THE SAFE DIRECTION.

CONTENTS

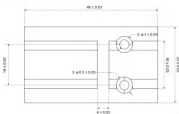
MOUNTING & FOOTPRINTS	4
SCREWS	6
ZEROING	7
TURNING ON & ILLUMINATION ADJUSTMENT	7
BATTERY EXCHANGE	9
MAINTENANCE	9
STORAGE	10
RETICLE	11
WARRANTY	12
NOTES	14

FOOTPRINT PATTERN

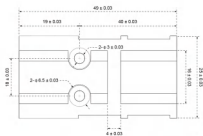
V \leftrightarrow \leftrightarrow -M™ Red Dot Footprint



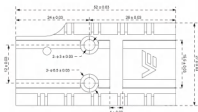
V \leftrightarrow \leftrightarrow ™ Red Dot Footprint



V \leftrightarrow \leftrightarrow ™ Red Dot Footprint



V \leftrightarrow \leftrightarrow ™ Red Dot Footprint



MOUNTING

The red dot sight is intended for use on pistol slides. It adopts an industry-standard mounting interface and is compatible with the footprint that meets the criteria shown above. The red dot sight can also accept a picatinny or dovetail mount with a compatible footprint.

If the red dot sight is installed on the gun by means of its integrated QD mount. Release the quick detach lever to loosen the mount. Place the scope objective lens towards the muzzle. Set the scope flat on top of the rail base. Make sure the cross bolt is located in a recoil groove. For safety reasons, allow at least 3 inches of clearance between the scope and your eyes. After the scope is in place securely flip back the quick detach lever. If the mount is too loose or tight, adjust the mount nut on the other side.



Do not over-tighten the mount, or it may damage your scope. Max 30 in/lbs (2.5 ft/lbs, or 3.4 Nm) for mounting base screws.

SCREWS MAY COME WITH THE SIGHT:

#1

M3x0.5



#2

M3.5x0.6



#3

M3.5x0.6



#4

M4x0.7



Effective Length:

11MM

8MM

10MM

7MM

Head Type:

Light Tapered

Tapered

Tapered

Tapered

Head Drive:

Torx T10

Torx T10

Torx T10

Torx T10

#5

M4x0.7



#6

#6-32x0.35



#7

#6-32x0.45



#8

#6-32x0.45



Effective Length:

8.5MM

7MM

9.5MM

9.5MM

Head Type:

Tapered

Tapered

Light Tapered

Light Tapered

Head Drive:

Torx T10

Torx T10

Torx T10

Hexago

ZEROING

The sight features elevation and windage adjustments. Referring to the point of impact you will need to adjust both windage and elevation screws. The elevation is the vertical (up and down) adjustment, usually on the top of the scope. Windage is the horizontal (left-to-right) adjustment, usually on the right of the sight.

With the sight mounted aim at a target 100 yards away. Slowly shoot a small 3 to 5-round test group onto your target. Adjust windage & elevation screws in the direction you want to move the bullet impact. Should your impacts be below your point of aim, dial UP to reach zero. Should your impacts be left to your point of aim, dial R(right) to reach zero. Each adjustment moves the point of impact. Shoot another 3 to 5-round test group. Repeat until you are satisfied with the point of aim.

TURNING ON & ILLUMINATION ADJUSTMENT

The sight is activated by using the digital on/off switch placed on the left of the sight. The sight has 8 levels of visible dot & 2 NV dots or 9 levels of visible dot & 2 NV dots. Press and hold the '+' switch for 1 second to turn the unit on. Subsequently, pressing the switch will increase the dot intensity. Pressing the switch will decrease the dot intensity. Press

the '-' switch will decrease the dot intensity. Press and hold the '-' switch for more than 3 seconds to turn the sight off.

Automatic Light Sensor (AUT): Some sights have the AUT suffix which means Automatic Light Sensor mode. When the sight is on, press and hold the '+' switch for more than 4 seconds to switch from manual control to automatic light sense mode. The dot brightness is adjusted automatically based on ambient light conditions.

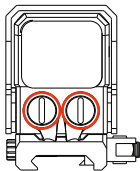
If the sight doesn't have a separate illumination switch to turn on or off. With a battery installed, the sight will power on and adjust the brightness automatically based on ambient light conditions. When the protective cap is covered, the sight with intelligent power management will maximize the battery life. The battery life may vary according to the use, ambient conditions, and reticle intensity. Always install the protective cap on the sight for maximum battery life.

Motion Sensor illumination (MOS): If the sight comes with this system, it will power on when it senses any motion and power down when it is at rest after 3 minutes.

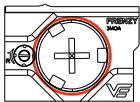
Solar Power Engaged (if applicable): It allows the red dot sight to continue to power on when the battery fails. You can still manually control the dot intensity by pressing the '+' or '-' switch.

BATTERY EXCHANGE

The red dot sight is powered by 2 pieces of the AAA button battery. Should the dot grows dim or not turn on, you will need to exchange the battery. To exchange the AAA battery, rotate the battery cover on the objective lens end by hand. Remove the sight from the mount. Take out the used battery, exchange it with a new one, and then assemble the sight again.



The red dot sight is powered by 1 piece of the CR2032 button battery. Should the dot grows dim or not turn on, you will need to exchange the battery. To exchange the CR2032 battery, use the supplied hex key to loosen the two screws. Remove the sight from the mount. Take out the used battery, exchange it with a new one, and then assemble the sight again.



MAINTENANCE

Your red dot sight, though amazingly tough, is a precision instrument that deserves reasonable cautious care.

- When cleaning the lens, first blow away any dirt and dust, or use a soft lens brush. Fingerprints and lubricants can be wiped off with lens tissue, or soft cleancotton cloth, moistened with lens cleaning fluid.
- All moving parts of the red dot sight are permanently lubricated. Do not try to lubricate them.
- No maintenance is needed on the red dot sight's outer surface, except to occasionally wipe off dirt or fingerprints with a soft cloth.
- Use lens covers whenever convenient.

STORAGE

Avoid storing the red dot sight in hot places, such as the passenger compartments of vehicles on hot days. The high temperatures could adversely affect the lubricants and sealants. A vehicle's trunk, a gun cabinet, or a closet is preferable. Never leave the red dot sight where direct sunlight can enter either the objective lens.

Damage may result from the concentration (burning glass effect) of the sun's rays.



- *KEEP BATTERY AWAY FROM CHILDREN.*
- *IF BATTERY IS SWALLOWED OR ENTERS THE BODY, SEEK IMMEDIATE MEDICAL ATTENTION.*
- *BATTERY MISUSE OR ABUSE MAY RESULT IN LEAKAGE, FIRE OR EXPLOSION.*
- *DISPOSE OF USED BATTERIES IMMEDIATELY.*

RETICLE PATTERN

Dot Size



3MOA Red Dot



5MOA Green Dot



6MOA Red Dot

Multi Reticle (If applicable)



Circle + Crosshair Dot

40MOA Circle



Crosshair Circle

52MOA Crosshair



Standard Dot

2MOA RED Dot

PRESS THE '+' BUTTON FOR MORE THAN 3 SECONDS TO SWITCH THE RETICLE.
FOR MORE DETAILS, PLEASE SCAN QR CODE OR VISIT THE LINK :

<https://youtu.be/idiJ2atdv9Q>



VECTOR OPTICS TAILED VIP LIFETIME WARRANTY

Your VectorOptics Continental, Taurus, Paragon, Scrapper, and Frenzy line products are covered by our T-VIP lifetime warranty. We will, at our option, either repair or replace your VectorOptics product without any cost if it is damaged or defective. If we can't repair your damaged product, we will replace it with a brand new one in perfect condition. We proudly stand behind our products. You have our word that we will do what it takes to retain your business as a satisfied customer. You can count on our T-VIP lifetime warranty.

- Unlimited full lifetime warranty.
- Reply to you in 1 working day.
- Free repair or replacement.
- Fully transferable.
- No invoice or receipt is needed.
- No question asked, however, we do appreciate your feedback.
- We pay for shipping back to you.

This warranty does not cover product loss, theft, deliberate damage, abuse, misapplication, or modification. This warranty does not apply to electronic components or batteries.

For warranty service please contact our Customer Service Department online at service@vectoroptics.com for return instructions. If you need to return the product, please ensure the shipment and keep the tracking records. We can not be responsible for your product until it has been received by our Customer Service Department. For products not directly purchased from us, please contact the local dealer for applicable warranty info.

Any warranty must be registered and complete warranty terms by the link:

warranty.vectoroptics.com

We thank you for your business. Be Safe and Have Fun!



NOTES

NOTES

FRENZY

RED DOT SIGHT

Manual # Frenzy Series

www.vectoroptics.com

@ vector_optics

